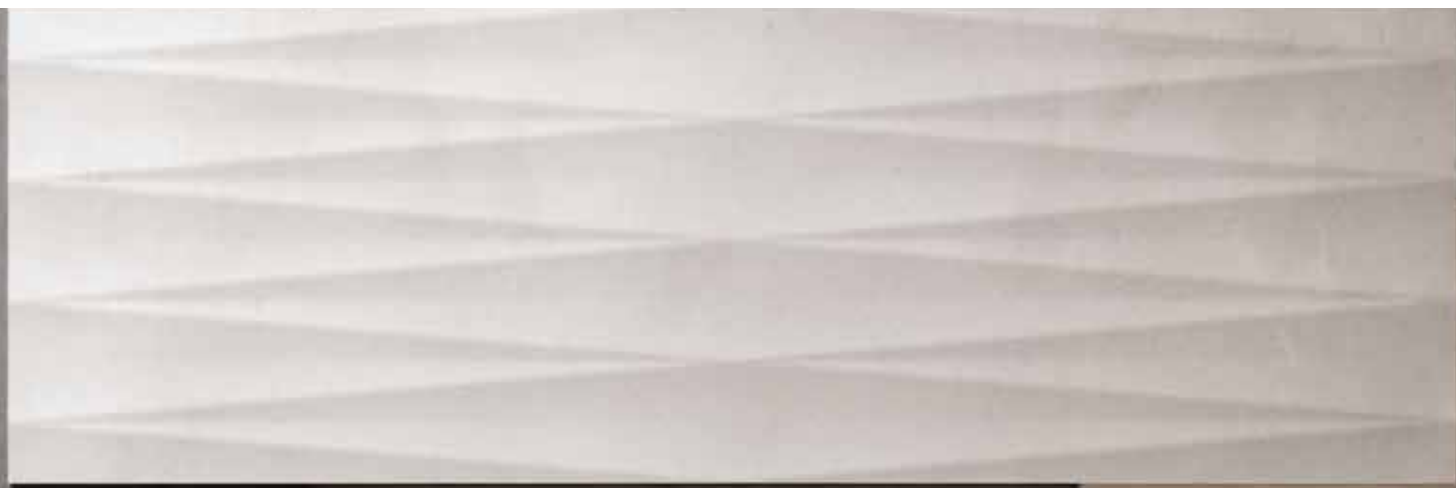


art



CERAMICHE  
SUPERGRES

Tradizione e ricerca tecnologica, materia e design, passato e futuro. È la fusione di più stimoli, l'incontro di tendenze diverse che ha portato alla progettazione di ART, una materia che si ispira al cemento, con superfici naturali e colori dalle tonalità neutre, per un gusto pulito ed essenziale. ART è un progetto completo di pavimenti in gres porcellanato e rivestimenti in pasta bianca. Il gres porcellanato è disponibile in quattro colori - clay, tobacco, cement e graphite - disponibili in cinque grandi formati. Il progetto si completa con due colorazioni di cementine decorate per arricchire ambienti residenziali e spazi commerciali con gusto ed eleganza. Il rivestimento in pasta bianca, nel formato rettificato 30,5x91,5, è realizzato in 4 tonalità: tobacco, graphite, silk e pearl, e in 2 diverse strutture tridimensionali. Art è anche disponibile nella versione strutturata per esterni T\_20.

Tradition et recherche technologique, matière et design, passé et futur. Il s'agit de la fusion de plusieurs stimulations, de la rencontre de tendances différentes qui ont conduit à la conception d'ART, une matière qui s'inspire du ciment, avec des surfaces naturelles et des coloris aux tonalités neutres, pour un goût sobre et essentiel. ART est un projet composé de sols en grès cérame et de revêtements en pâte blanche. Le grès cérame est disponible dans quatre couleurs - clay, tobacco, cement et graphite - disponibles dans cinq grands formats. Le projet est complété par deux colorations de cimentine décorées pour enrichir les environnements résidentiels et les espaces commerciaux avec goût et élégance. Le revêtement en pâte blanche, réalisé dans le format rectifié 30,5x91,5, est disponible dans 4 tonalités : tobacco, graphite, silk et pearl. En outre, le revêtement est disponible dans 2 structures tridimensionnelles différentes. Art est aussi disponible dans la version structurée pour extérieurs T\_20.

# art

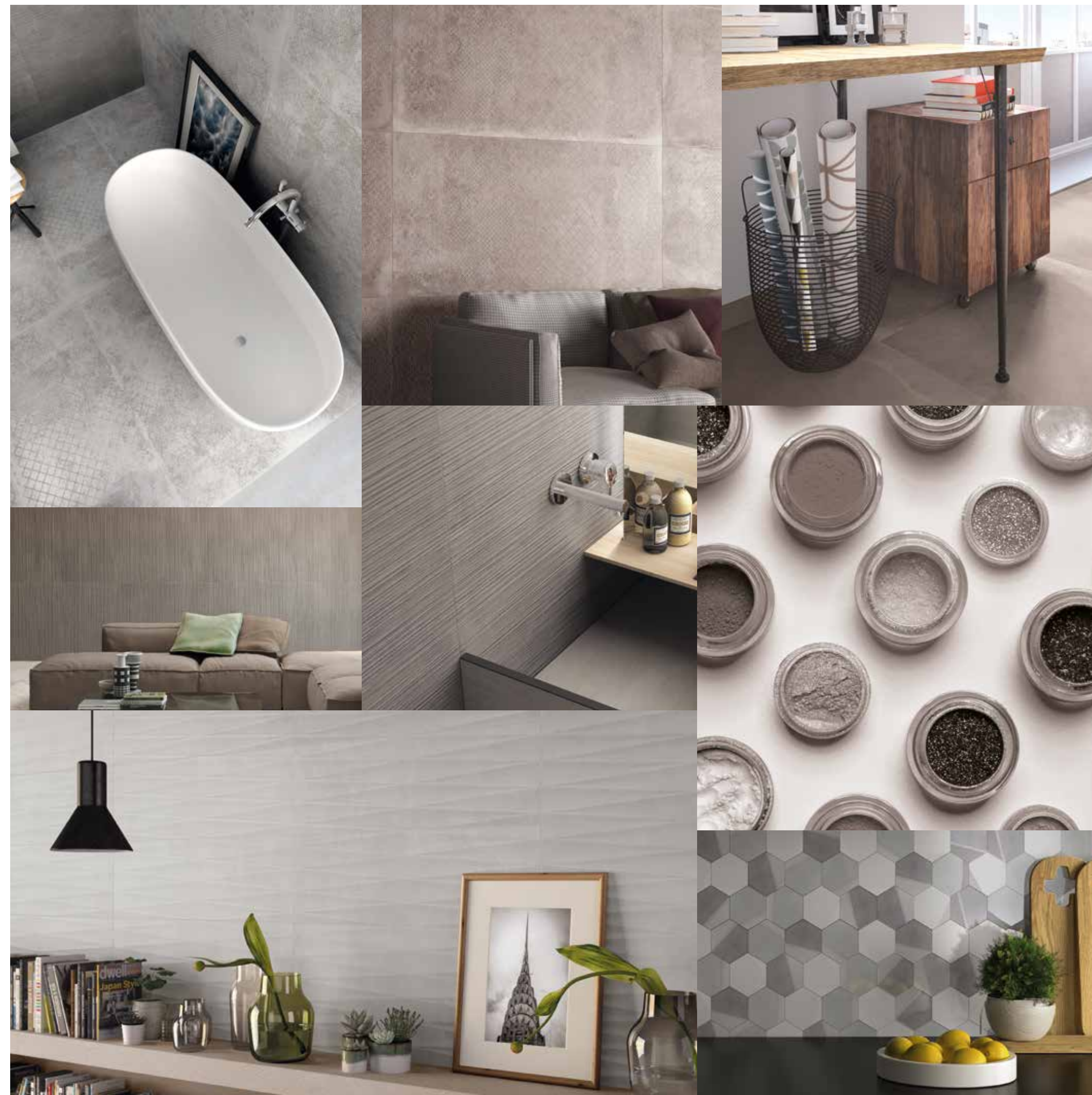
Tradition und technologische Forschung, Material und Design, Vergangenheit und Zukunft. Es war eine Fusion verschiedener Anregungen, eine Begegnung unterschiedlicher Tendenzen, die zur Planung von ART geführt hat, einem am Zement angelehnten Material mit natürlichen Oberflächen und neutralen Farben für einen sauberen, schlichten Geschmack. ART ist ein umfassendes Projekt aus Feinsteinzeug und weißscherbigen Verkleidungen. Das Feinsteinzeug ist in vier Farben - clay, tobacco, cement und graphite - in fünf Großformaten erhältlich. Das Projekt wird durch zwei verschieden gefärbte dekorierte Cemente-Versionen für die Bereicherung von Wohnräumen und Gewerbebereichen mit Geschmack und Eleganz ergänzt. Die weißscherbige Verkleidung, die im rektifizierten Format 30,5x91,5 gefertigt wird, ist in 4 Farbtönen erhältlich: tobacco, graphite, silk und pearl. Die Verkleidung ist außerdem in 2 verschiedenen dreidimensionalen Strukturen erhältlich. Art ist auch in der strukturierten Version für Außenbereiche T\_20 verfügbar.

Tradition and technological research, material and design, past and future. A blend of various stimuli, an encounter between different trends that has led to the designing of ART, a material that draws its inspiration from cement, featuring natural surfaces in neutral shades for a simple, subtly tasteful effect. ART is a complete project of porcelain stoneware floor coverings and white-body wall coverings. The porcelain stoneware comes in four colours - clay, tobacco, cement and graphite - and in five large sizes. The project is completed with cement tiles in two colours, decorated to bring a tastefully elegant finish to both residential and commercial settings. The white-body wall covering, in the rectified 30.5x91.5 size, is available in four shades: tobacco, graphite, silk and pearl, and also with two different three-dimensional textures. Art is also available in the textured version for outdoors T\_20.

Tradición e investigación tecnológica, materia y diseño, pasado y futuro. Es la fusión de un mayor número de estímulos, el encuentro de varias tendencias que ha ocasionado la concepción de ART, una materia que se inspira en el cemento, con superficies naturales y tonalidades neutras, para un gusto limpio y esencial. ART es un proyecto completo de pavimentos en gres porcelánico y revestimientos en pasta blanca. El gres porcelánico está disponible en 4 tonalidades (clay, tobacco, cement y graphite) y en 5 formatos grandes. El proyecto se completa con dos coloraciones de baldosas hidráulicas decoradas para embellecer ambientes residenciales y espacios comerciales con gusto y elegancia. El revestimiento en pasta blanca, realizado en el formato rectificado 30,5x91,5, está disponible en 4 tonalidades (tobacco, graphite, silk y pearl) y, también, en 2 estructuras tridimensionales diferentes. Art está también disponible en la versión estructurada para exteriores T\_20.

Традиция и новые технологические разработки, материя и дизайн, прошлое и настоящее. Это слияние стимулов, объединение различных тенденций, которое привело к созданию проекта ART, материала, вдохновленного фактурой цемента, с естественной поверхностью в нейтральных тонах, в простом и изысканном стиле. ART - это комплексный проект по созданию напольных покрытий из керамического гранита и облицовочных плит из белой массы. Плитка из керамогранита предлагается в четырех тонах - clay, tobacco, cement и graphite, в четырех крупных форматах. Коллекцию дополняют два типа декорированной плитки из материала Цементин для создания более богатого декора для отделки жилых и торговых площадей с безупречным вкусом и элегантностью. Облицовка из ректифицированной плитки из белой массы форматом 30,5x91,5 имеет в 4 оттенках: tobacco, graphite, silk и pearl. Облицовочная плитка предлагается также 2 типов трехмерной структуры. Плитки Art доступны также со структурной поверхностью для наружных пространств T\_20.

CERAMICHE  
SUPERGRES

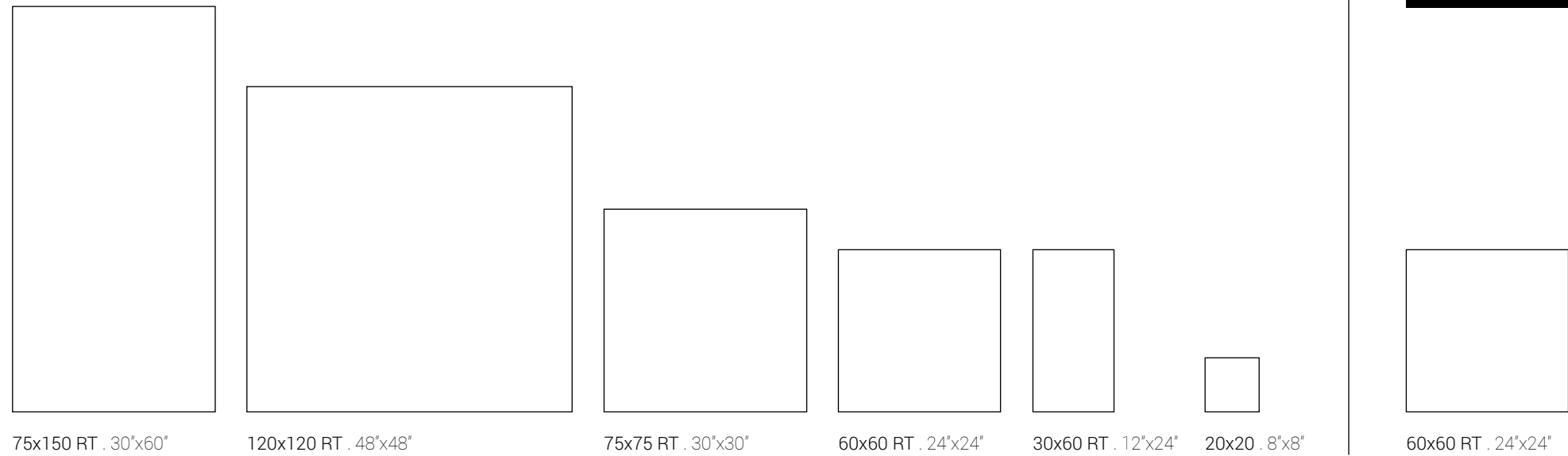


# art

**GRES PORCELLANATO** . GRÈS CÉRAME . FEINSTEINZEUG . PORCELAIN STONEWARE . GRES PORCELANICO . КЕРАМОГРАНИТ



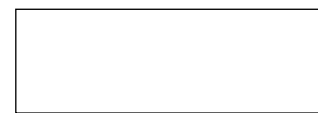
art clay art tobacco art cement art graphite



**RIVESTIMENTO IN PASTA BIANCA** . REVÊTEMENTS EN PÂTE BLANCHE . WEISSSCHERBIGER WANDFLIESEN . WHITE BODY WALL TILES  
 REVESTIMIENTOS EN PASTA BLANCA . НАСТЕННАЯ ПЛИТКА ИЗ БЕЛОЙ ГЛИНЫ



art silk art tobacco art pearl art graphite



30,5x91,5 RT . 12"x36"

CERAMICHE  
**SUPERGRES**



art cement | art pearl



ART CEMENT 75x150 RT - 30"x60"

art cement

reading room



art cement | art dek cementine cold



ART CEMENT 60x60 RT - 24"x24" ART DEK CEMENTINE COLD 20x20 - 8"x8"

art pearl



ART PEARL STRUTT.SIGN 30.5x91.5 RT - 12"x36" ART PEARL 30.5x91.5 RT - 12"x36" ART PEARL/GRAPHITE DEC.SHADE 30.5x91.5 RT - 12"x36"  
ART GRAPHITE STRUTT.SIGN 30.5x91.5 RT - 12"x36" ART CEMENT 75x75 RT - 30"x30"  
ART GRAPHITE MOSAICO 30x30RT - 12"x12" ART GRAPHITE GRADONE C/PROF.INC., 33x150- 13"x60"



ART PEARL STRUTT.SIGN 30.5x91.5 RT - 12"x36" ART PEARL/GRAPHITE DEC.SHADE 30.5x91.5 RT - 12"x36"  
 ART GRAPHITE MOSAICO 30x30RT -12"x12" ART GRAPHITE GRADONE C/PROF.INC., 33x150- 13"x60"

art pearl



ART PEARL 30.5x91.5 RT - 12"x36" PROFILO METALLO ARGENTO 0.5x100 - 0.2"x40"  
 ART PEARL/GRAPHITE DEC.SHADE 30.5x91.5 - 12"x36"



art graphite



ART GRAPHITE 75x150 RT 30"x60" ART GRAPHITE GRADONE C/PROF.INC.33x150RT 13"x60"

art graphite | art silk



ART GRAPHITE 75x150 RT - 30"x60" ART GRAPHITE GRADONE C/PROF.INC 33x150RT - 13"x60"  
ART SILK STRUTT.SIGN 30.5x91.5RT - 12"x36"

art graphite



ART GRAPHITE 75x75RT - 30"x30" ART GRAPHITE 75x150RT - 30"x60" MOS.ESAGONA DEK.GREY 34.5x29.8 - 12.6"x11.7"



ART GRAPHITE 75x75 RT - 30"x30"

art graphite



MOS.ESAGONA DEK GREY 34.5x29.8 12.6"x11.7"

art graphite | art cement



ART CEMENT DEC.MELT 75x150RT - 30"x60" ART GRAPHITE STRUTT.SIGN 30.5x91.5RT - 12"x36" ART GRAPHITE 75x150RT - 30"x60"



art cement T\_20 |  
art graphite T\_20

T\_20



ART CEMENT 60x60RT - 24"x24" ART GRAPHITE 60x60RT - 24"x24" ART CEMENT T\_20 TERM. ELLE 20x60RT - 8'x24"

art clay | art silk



ART CLAY 75x150 RT 30"x60"

art clay



ART CLAY 75x150RT - 30"x60" ART TOBACCO DEC MELT 75x150RT - 30"x60"



art clay | art tobacco



ART CLAY 75x75RT - 30"x30" ART TOBACCO 75x150 RT 30"x60" ART CLAY DEC MELT 75x150 30"x60" PROFILO METALLO RAME 0.5x100 - 0.2"x4"



ART CLAY 75x75RT - 30"x30"

# art clay | art tobacco



ART TOBACCO 75x150 RT - 30"x60"  
ART CLAY DEC.MELT 75x150RT - 30"x60"  
PROFILO METALLO RAME 0.5x100 - 2"x40"

art clay | art silk



ART SILK STRUTT NET 30.5x91.5 - 12"x36" ART SILK 30.5x91.5 12"x36"  
ART CLAY 75x75RT - 30"x30" NORTHWHITE 19.7x120RT - 7<sup>3</sup>/<sub>4</sub>"x48" SERIE TRAVEL



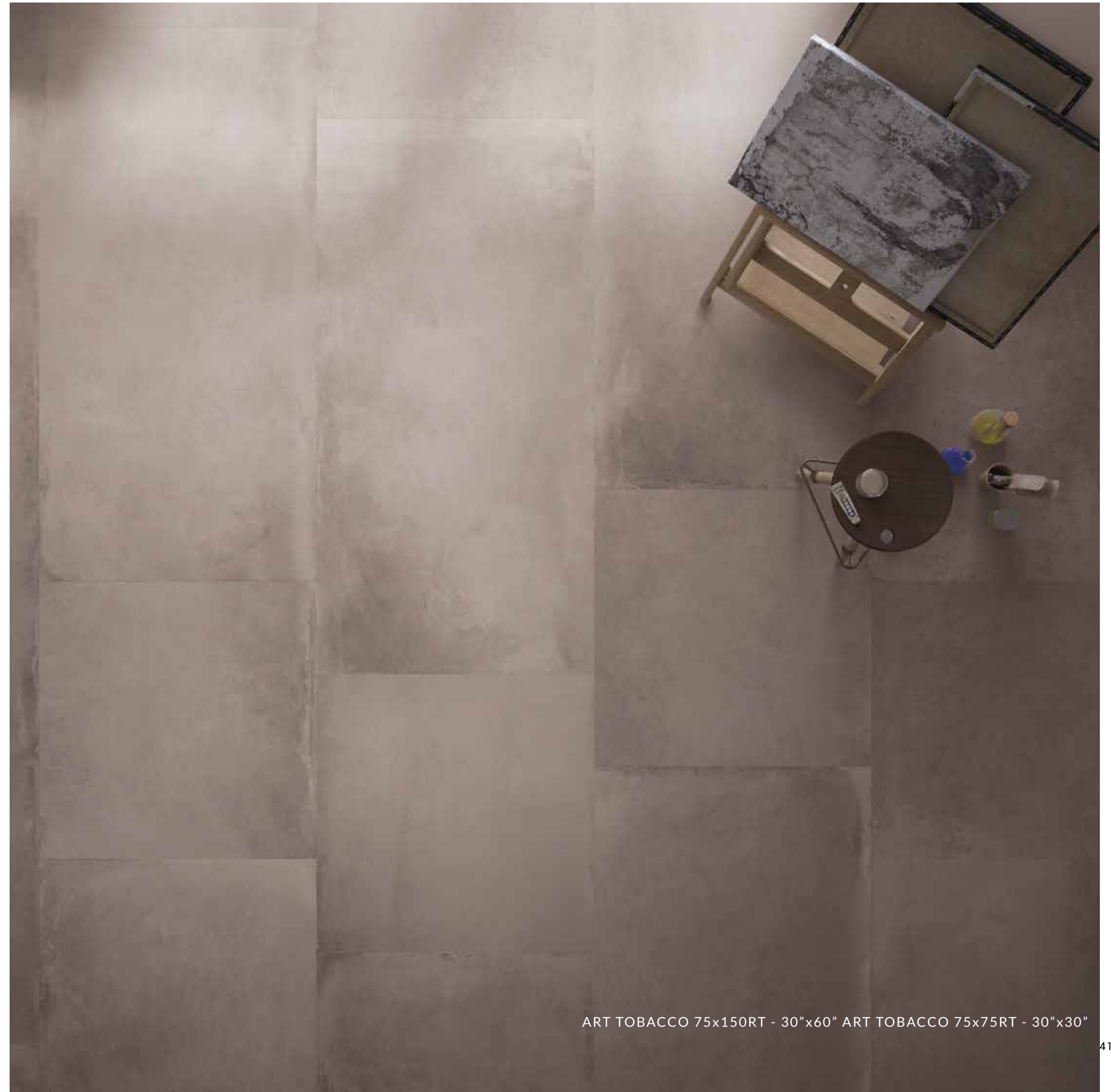
ART SILK STRUTT.NET 30.5x91.5RT 12"x36" ART SILK 30.5X91.5 RT12"x36"

art clay | art silk



ART CLAY 75x75RT 30"x30" NORTHWHITE 19.7x120RT 7<sup>3</sup>/<sub>4</sub>"x48"

art tobacco



ART TOBACCO 75x150RT - 30"x60" ART TOBACCO 75x75RT - 30"x30"

art tobacco



ART TOBACCO 75x150RT - 30"x60" ART TOBACCO 75x75RT - 30"x30"

# art dek cementine warm



ART DEK CEMENTINE WARM 20x20 - 8"x8"



ART DEK CEMENTINE WARM 20x20 - 8"x8"  
REMAKE BROWN 19.7x120 RT 7 3/4"x48" SERIE REMAKE

art tobacco | art silk



ART TOBACCO STRUTT SIGN 30.5x91.5RT - 12"x36" ART SILK 30.5x91.5RT 12"x36"  
MOS. ESAGONA DEK SAND 34.5x29.8 - 12.6"x11.7"  
PROFILO METALLO RAME 0.5x100 0.2"x40" ART TOBACCO 75x75RT - 30"x30"



art tobacco | art silk



ART TOBACCO STRUTT.SIGN 30.5x91.5RT - 12"x36"



ART TOBACCO 75x75RT 30"x30"  
MOS.ESAGONA DEK SAND 34.5x29.7 - 12.6"x11.7"  
PROFILO METALLO RAME 0.5x100 0.2"x40"

# art

GRES PORCELLANATO . GRÈS CÉRAME . FEINSTEINZEUG . PORCELAIN STONWARE . GRES PORCELANICO . КЕРАМОГРАНИТ

art cement



art graphite



art clay



art tobacco



# art art cement

120x120 RT 9 mm ⇄ 75x150 RT . 75x75 RT . 60x60 RT . 30x60 RT 9,5 mm ⇄ 20x20 9 mm ⇄

GRES PORCELLANATO . GRÈS CÉRAME . FEINSTEINZEUG . PORCELAIN STONEWARE . GRES PORCELANICO . КЕРАМОГРАНИТ  
EN 14411 Allegato G\_Piastrelle di ceramica pressate a secco con basso assorbimento d'acqua (E ≤ 0,5%) . Gruppo B la UGL (non smaltate, non émaille, unglasierte, unglazed, no esmaltado, Неглазурованные)



ART CEMENT  
75x150 RT . 30"x60"



ART CEMENT  
120x120 RT . 48"x48"



ART CEMENT  
75x75 RT . 30"x30"

**T.20**

Disponibili in  
Disponibles  
In allen  
Available in  
Disponibile en  
Доступны  
60x60 RT 20 mm ⇄



ART CEMENT  
30x60 RT . 12"x24"



ART CEMENT  
60x60 RT . 24"x24"



ART CEMENT DEC. MELT  
75x150 RT . 30"x60"

18 soggetti diversi, formato 20x20.  
L'assortimento all'interno della scatola è  
puramente casuale.

18 different types of graphics, 20x20 size.  
The assortment in the box is purely random.



ART DEK CEMENTINE COLD  
20x20 . 8"x8"



ART CEMENT MOSAICO  
30x30 RT . 12"x12"

MOS. ESAGONA DEC. GREY  
34,5x29,8 RT . 12,6"x11,7"

Formato tessera  
4,8x4,8 - 1 7/8"x 1 7/8"  
Mosaic size

# art art graphite

120x120 RT 9 mm ⇄ 75x150 RT . 75x75 RT . 60x60 RT . 30x60 RT 9,5 mm ⇄ 20x20 9 mm ⇄

GRES PORCELLANATO . GRÈS CÉRAMÉ . FEINSTEINZEUG . PORCELAIN STONEWARE . GRES PORCELANICO . КЕРАМОГРАНИТ  
EN 14411 Allegato G\_Piastrelle di ceramica pressate a secco con basso assorbimento d'acqua (E ≤ 0,5%) . Gruppo B la UGL (non smaltate, non émaille, unglasierte, unglazed, no esmaltado, Неглазурованные)



ART GRAPHITE  
75x150 RT . 30"x60"



ART GRAPHITE  
120x120 RT . 48"x48"



ART GRAPHITE  
75x75 RT . 30"x30"

**T.20**

Disponibili in  
Disponibles  
In allen  
Available in  
Disponibile en  
Доступны  
60x60 RT 20 mm ⇄



ART GRAPHITE  
30x60 RT . 12"x24"



ART GRAPHITE  
60x60 RT . 24"x24"



ART GRAPHITE DEC. MELT  
75x150 RT . 30"x60"

18 soggetti diversi, formato 20x20.  
L'assortimento all'interno della scatola è  
puramente casuale.

18 different types of graphics, 20x20 size.  
The assortment in the box is purely random.



ART DEK CEMENTINE COLD  
20x20 . 8"x8"



ART GRAPHITE MOSAICO  
30x30 RT . 12"x12"



MOS. ESAGONA DEC. GREY  
34,5x29,8 RT . 12,6"x11,7"

Formato tessera  
4,8x4,8 - 1 7/8"x 1 7/8"  
Mosaic size

# art art clay

120x120 RT 9 mm ⇄ 75x150 RT . 75x75 RT . 60x60 RT . 30x60 RT 9,5 mm ⇄ 20x20 9 mm ⇄

GRES PORCELLANATO . GRÈS CÉRAMÉ . FEINSTEINZEUG . PORCELAIN STONEWARE . GRES PORCELANICO . КЕРАМОГРАНИТ  
EN 14411 Allegato G\_Piastrelle di ceramica pressate a secco con basso assorbimento d'acqua (E ≤ 0,5%) . Gruppo B la UGL (non smaltate, non émaille, unglasierte, unglazed, no esmaltado, Неглазурованные)



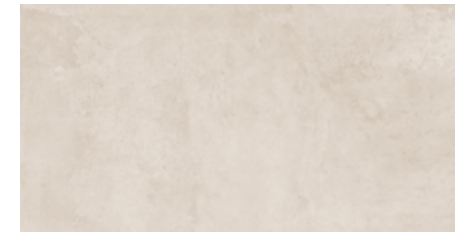
ART CLAY  
75x150 RT . 30"x60"



ART CLAY  
120x120 RT . 48"x48"



ART CLAY  
75x75 RT . 30"x30"



ART CLAY  
30x60 RT . 12"x24"



ART CLAY  
60x60 RT . 24"x24"



ART CLAY DEC.MELT  
75x150 RT . 30"x60"

18 soggetti diversi, formato 20x20.  
L'assortimento all'interno della scatola è puramente casuale.

18 different types of graphics, 20x20 size.  
The assortment in the box is purely random.



ART DEK CEMENTINE WARM  
20x20 . 8"x8"



ART CLAY MOSAICO  
30x30 RT . 12"x12"



MOS. ESAGONA DEC. SAND  
34,5x29,8 RT . 12,6"x11,7"

Formato tessera  
4,8x4,8 - 1 7/8"x 1 7/8"  
Mosaic size

# art art tobacco

75x150 RT . 75x75 RT . 60x60 RT . 30x60 RT 9,5 mm ⇄ 20x20 9 mm ⇄

GRES PORCELLANATO . GRÈS CÉRAMÉ . FEINSTEINZEUG . PORCELAIN STONEWARE . GRES PORCELANICO . КЕРАМОГРАНИТ  
EN 14411 Allegato G\_Piastrelle di ceramica pressate a secco con basso assorbimento d'acqua (E ≤ 0,5%) . Gruppo B la UGL (non smaltate, non émaille, unglasierte, unglazed, no esmaltado, Неглазурованные)



ART TOBACCO  
75x150 RT . 30"x60"



ART TOBACCO  
75x75 RT . 30"x30"



ART TOBACCO  
60x60 RT . 24"x24"

**T.20**

Disponibili in  
Disponibles  
In allen  
Available in  
Disponibile en  
Доступны  
60x60 RT 20 mm ⇄



ART TOBACCO  
30x60 RT . 12"x24"



ART TOBACCO DEC. MELT  
75x150 RT . 30"x60"



18 soggetti diversi, formato 20x20.  
L'assortimento all'interno della scatola è  
puramente casuale.

18 different types of graphics, 20x20 size.  
The assortment in the box is purely random.

ART DEK CEMENTINE WARM  
20x20 . 8"x8"

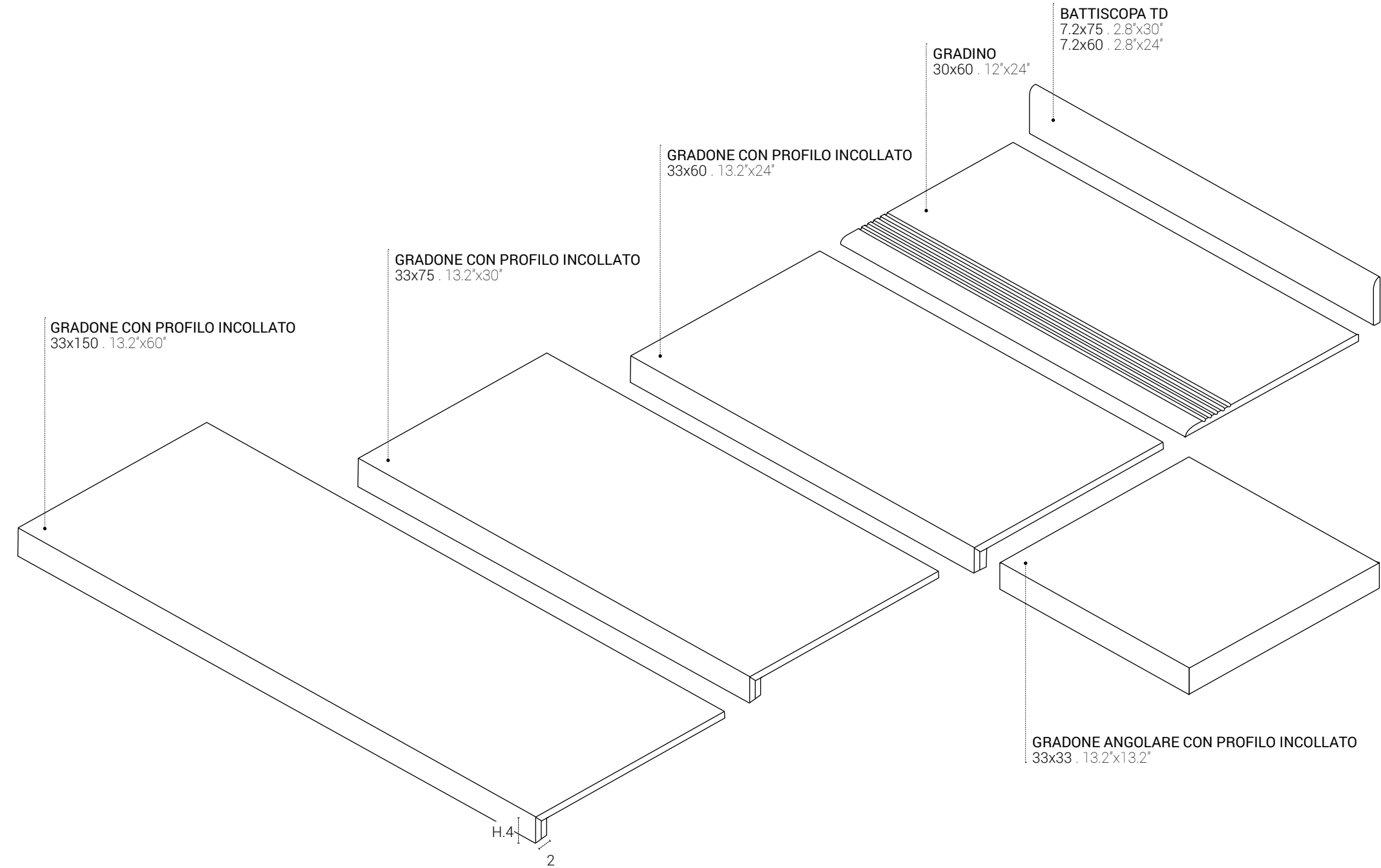


ART TOBACCO MOSAICO  
30x30 RT . 12"x12"



MOS. ESAGONA DEC. SAND  
34,5x29,8 RT . 12,6"x11,7"

Formato tessera  
4,8x4,8 - 1 7/8"x 1 7/8"  
Mosaic size



**PEZZI SPECIALI DISPONIBILI SU TUTTI I COLORI, SU ORDINAZIONE.**  
 PIÈCES SPÉCIALES DISPONIBLES DANS TOUTES LES COULEURS, SUR DEMANDE.  
 FORMTEILE AUF BESTELLUNG IN ALLEN FARBEN VERFÜGBAR.  
 TRIM TILES AVAILABLE IN ALL COLORS, TO ORDER.  
 PIEZAS ESPECIALES DISPONIBLES EN TODOS LOS COLORES POR ENCARGO.  
 СПЕЦИАЛЬНЫЕ ЭЛЕМЕНТЫ ДОСТУПНЫ ДЛЯ ВСЕХ ЦВЕТОВ ПО ЗАПРОСУ.

# art

RIVESTIMENTO IN PASTA BIANCA . REVÊTEMENTS EN PÂTE BLANCHE . WEISSSCHERBIGER WANDFLIESEN . WHITE BODY WALL TILES  
REVESTIMIENTOS EN PASTA BLANCA . НАСТЕННАЯ ПЛИТКА ИЗ БЕЛОЙ ГЛИНЫ

art pearl

art graphite

art silk

art tobacco





# art

30,5x91,5 RT 8,5 mm ⇄



**ART SILK STRUTTURA SIGN**  
30,5x91,5 RT . 12"x36"



**ART SILK**  
30,5x91,5 RT . 12"x36"



**ART SILK STRUTTURA NET**  
30,5x91,5 RT . 12"x36"

RIVESTIMENTO IN PASTA BIANCA . REVÊTEMENTS EN PÂTE BLANCHE . WEISSSCHERBIGER WANDFLIESEN . WHITE BODY WALL TILES .  
REVESTIMIENTOS EN PASTA BLANCA . НАСТЕННАЯ ПЛИТКА ИЗ БЕЛОЙ ГЛИНЫ

EN 14411 Allegato L\_Piastrelle di ceramica pressate a secco (E > 10%) Gruppo BIII GL (smaltate, émaille, glasierte, glazed, esmaltado, глазурованные)



**ART PEARL STRUTTURA SIGN**  
30,5x91,5 RT . 12"x36"



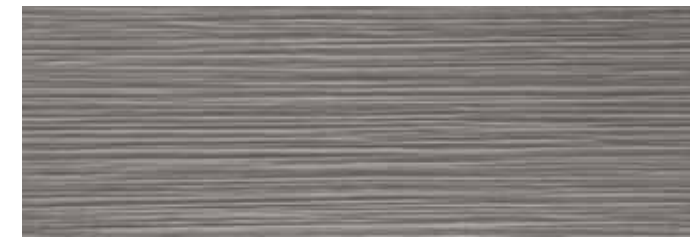
**ART PEARL**  
30,5x91,5 RT . 12"x36"



**ART PEARL STRUTTURA NET**  
30,5x91,5 RT . 12"x36"



**ART TOBACCO STRUTTURA SIGN**  
30,5x91,5 RT . 12"x36"



**ART GRAPHITE STRUTTURA SIGN**  
30,5x91,5 RT . 12"x36"



**ART SILK/TOBACCO DEC. SHADE**  
30,5x91,5 RT . 12"x36"



**MOS.ESAGONA DEK SAND**  
34,5x29,8 RT . 12,6"x11,7"



**PROFILO METALLO ARGENTO**  
0,5x100 . 0,2"x40"



**PROFILO METALLO ORO**  
0,5x100 . 0,2"x40"



**PROFILO METALLO RAME**  
0,5x100 . 0,2"x40"



**ART PEARL/GRAPHITE DEC. SHADE**  
30,5x91,5 RT . 12"x36"



**MOS.ESAGONA DEK.GREY**  
34,5x29,8 RT . 12,6"x11,7"



**PROFILO METALLO ARGENTO**  
0,5x100 . 0,2"x40"



**PROFILO METALLO ORO**  
0,5x100 . 0,2"x40"



**PROFILO METALLO RAME**  
0,5x100 . 0,2"x40"

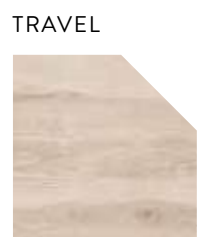
PAVIMENTI COORDINABILI IN GRES PORCELLANATO . COORDINATE FLOORS TILES PORCELAIN STONEWARE  
Sol coordonné en grès c rame . Koodinierte bodenfliesen feinsteinzeug . Pavimentos coordinados en gres porcel nico . Сочетающиеся керамогранитные полыпобы



Art Clay



Art Tobacco



Northwhite



Priv   cru

PAVIMENTI COORDINABILI IN GRES PORCELLANATO . COORDINATE FLOORS TILES PORCELAIN STONEWARE  
Sol coordonn  en gr s c rame . Koodinierte bodenfliesen feinsteinzeug . Pavimentos coordinados en gres porcel nico . Сочетающиеся керамогранитные полыпобы



Art Cement



Art Graphite



Eastgrey



Priv  Brun

CERAMICHE  
**SUPERGRES**



# art

GRES PORCELLANATO . GRÈS CÉRAMÉ . FEINSTEINZEUG . PORCELAIN TILE . GRES PORCELANICO . КЕРАМОГРАНИТ  
EN 14411 Allegato G\_Piastrelle di ceramica pressate a secco con basso assorbimento d'acqua (E ≤ 0,5%) . Gruppo B la UGL (non smaltate, non émaille, unglasierte, unglazed, no esmaltado, Неглазурованные)

75x150 RT . 75x75 RT . 60x60 RT . 30x60 RT **9,5 mm ⇄ 20x20 9 mm ⇄**

IMBALLI . EMBALLAGE . VERPACKUNG . PACKING . EMBALAJE . УПАКОВКА

	pz/box	mq/box	kg/box	box/plt	mq/plt	kg/plt	spessore
120x120 RT	2	2,88	58,00	20	57,60	1172	9 mm
75x150 RT	1	1,125	24,00	25	28,13	612	9,5 mm
75x75 RT	2	1,125	24,00	42	47,25	1020	9,5 mm
60x60 RT	3	1,08	23,00	40	43,20	932	9,5 mm
30x60 RT	6	1,08	23,40	40	43,20	948	9,5 mm
20x20 cementine decorate	30	1,20	23,90	56	67,20	1350	9 mm
75x150 RT dec. melt	1	1,125	24,00	25	28,13	612	9,5 mm
mosaico 30x30RT	10	0,90	17,00	30	27,00	525	-
mosaico esagona dek	6	0,62	11,50	-	-	-	-
profilo metallo 0,5x100	3	-	-	-	-	-	8 mm
battiscopa 7,2x60	10	6,00 ml	9,40	-	-	-	-
battiscopa 7,2x75	10	7,50 ml	11,00	-	-	-	-
gradino 30x60	6	-	-	-	-	-	-
gradone c/prof.incollato 33x150	2	-	-	-	-	-	-
gradone c/prof.incollato 33x75	2	-	-	-	-	-	-
gradone c/prof.incollato 33x60	4	-	-	-	-	-	-
ang/grad c/prof.inc. 33x33	4	-	-	-	-	-	-
60x60 RT T_20	2	0,72	32,00	30	21,60	972	20 mm

RIVESTIMENTO IN PASTA BIANCA . REVÊTEMENTS EN PÂTE BLANCHE . WEISSSCHERBIGER WANDFLIESEN . WHITE BODY WALL TILES .  
REVESTIMIENTOS EN PASTA BLANCA . НАСТЕННАЯ ПЛИТКА ИЗ БЕЛОЙ ГЛИНЫ

EN 14411 Allegato L\_Piastrelle di ceramica pressate a secco (E > 10%) Gruppo BIII GL (smaltate, émaille, glasierte, glazed, esmaltado, глазурованные)

30,5x91,5 RT **8,5 mm ⇄**

IMBALLI . EMBALLAGE . VERPACKUNG . PACKING . EMBALAJE . VERPACKUNG . УПАКОВКА

	pz/box	mq/box	kg/box	box/plt	mq/plt	kg/plt	spessore
30,5x91,5 RT	5	1,40	21,00	42	58,60	894	8,5 mm
30,5x91,5 RT Struttura	4	1,12	20,50	42	46,87	873	8,5 mm*
30,5x91,5 RT Decoro	2	-	-	-	-	-	-
profilo metallo 0,5x100	3	-	-	-	-	-	8 mm
mosaico esagona dek	6	0,62	11,50	42	25,91	495	9,5 mm

\* Spessore riferito al fondo liscio equivalente  
Thickness refers to the equivalent smooth background  
Épaisseur se rapportant au carreau lisse équivalent  
Die Stärke bezieht sich auf die entsprechende glatte Grundfliese.  
Espesor referido al fondo liso equivalente  
Толщина эквивалентной плитки с гладким основанием



**Per dettagli sul prodotto in 20 mm di spessore e sui relativi sistemi di posa ed, in particolare, per le raccomandazioni, accorgimenti, limitazioni di utilizzo e precauzioni in fase di posa, si raccomanda di prendere visione dell'ultima versione del catalogo T20 e del sito [www.supergres.com](http://www.supergres.com)**

Pour de plus amples détails sur les produits de 20 mm d'épaisseur et sur leurs systèmes de pose, et en particulier, pour les recommandations, mises à jour, limitations d'usage et précautions en phase de pose, veuillez prendre connaissance du catalogue T20 et du site [www.supergres.com](http://www.supergres.com)

Für Details zum Produkt mit 20 mm Stärke und entsprechende Verlegesysteme, insbesondere hinsichtlich Hinweise und Anmerkungen, Nutzungseinschränkungen und Vorsichtsmassnahmen während der Verlegung, wird die Einsicht des Katalogs T20 und der Webseite [www.supergres.com](http://www.supergres.com) empfohlen.

For further details on the 20 mm product and the installation systems, in particular for recommendations , restrictions of use, and precautions during installation, please refer to [www.supergres.com](http://www.supergres.com) and to the catalogue T20.

Para mayores informaciones sobre el producto de 20 mm de espesor y sobre los relativos sistemas de colocación y, en especial, para las recomendaciones, precauciones y límites de empleo en fase de colocación, se recomienda consultar el catálogoT20 y el sitio [www.supergres.com](http://www.supergres.com)

Подробнее о плитках толщиной 20 мм, о системах монтажа, об ограничениях в применении, о мерах предосторожности при укладке можно узнать в каталоге [catalogoT20](http://catalogoT20) и на сайте [www.supergres.com](http://www.supergres.com)

I dati e le informazioni riportate nel presente catalogo sono aggiornate al momento della stampa e potrebbero subire successive correzioni e/o modifiche. Verificare sempre l'ultima edizione disponibile confrontando la data riportata nell'ultima pagina della versione cartacea, con quella indicata nel pdf del catalogo scaricabile dal sito [www.supergres.com](http://www.supergres.com)

I colori e le caratteristiche estetiche dei prodotti sono indicativi e si avvicinano quanto più possibile a quelli reali nei limiti consentiti dai processi di stampa.

Data and information reported in this catalogue are updated at the moment of catalogue printing therefore they may be subject to subsequent corrections and/or amendments. Always check the latest available issue and compare the date reported on the last page of the hard-paper copy of the catalogue with that stated in the pdf. format downloadable on website [www.supergres.com](http://www.supergres.com)

The colours and aesthetic features of products are indicative and reproduce, as close as possible, the real colours and features taking into consideration the restrictions of printing processes.

© Copyright 2016 Ceramiche Supergres Casalgrande (Reggio Emilia) - Italy  
Pubblicato da Ceramiche Supergres. Strada Statale 467, n° 34 - 42013 Casalgrande (RE) Italy - Settembre 2016  
Progetto, direzione e coordinamento a cura dell'ufficio marketing Ceramiche Supergres

© Copyright 2016 by Ceramiche Supergres Casalgrande (Reggio Emilia) - Italy  
Published by Ceramiche Supergres. Strada Statale 467, n° 34 - 42013 Casalgrande (RE) Ital - September 2016  
Project, management and co-ordination by marketing Ceramiche Supergres

CERAMICHE  
**SUPERGRES**

Finito di stampare a Modena (MO) nel mese di Novembre 2017 da Golinelli C. Lab per conto di Ceramiche Supergres - Strada Statale 467, n° 34 - 42013 Casalgrande (RE) Italy  
I prodotti, i marchi e le immagini riprodotte nel presente catalogo sono tutelati ai sensi della normativa vigente in materia di proprietà intellettuale. Ogni violazione degli stessi verrà perseguita a norma di legge.

Printed in Modena (MO) in the month of November 2017 by Golinelli C. Lab on behalf of Ceramiche Supergres - Strada Statale 467, n° 34 - 42013 Casalgrande (RE) Italy  
All products, trade-marks and photographs reproduced in this catalogue are subject to all existing intellectual property laws. Any breach thereof will be dealt with under the provisions provided by such law.

CERAMICHE  
**SUPERGRES**

Office: Strada Statale 467, 34  
42013 Casalgrande (RE) Italy  
Ph. +39 0522 997411 . Fax Export +39 0522 997415  
Fax Italia +39 0522 997494

Warehouse: Via dell'Industria, 1  
Villaggio Macina - 42013 Salvaterra di Casalgrande (RE) Italy

[info@supergres.com](mailto:info@supergres.com) . [www.supergres.com](http://www.supergres.com)