

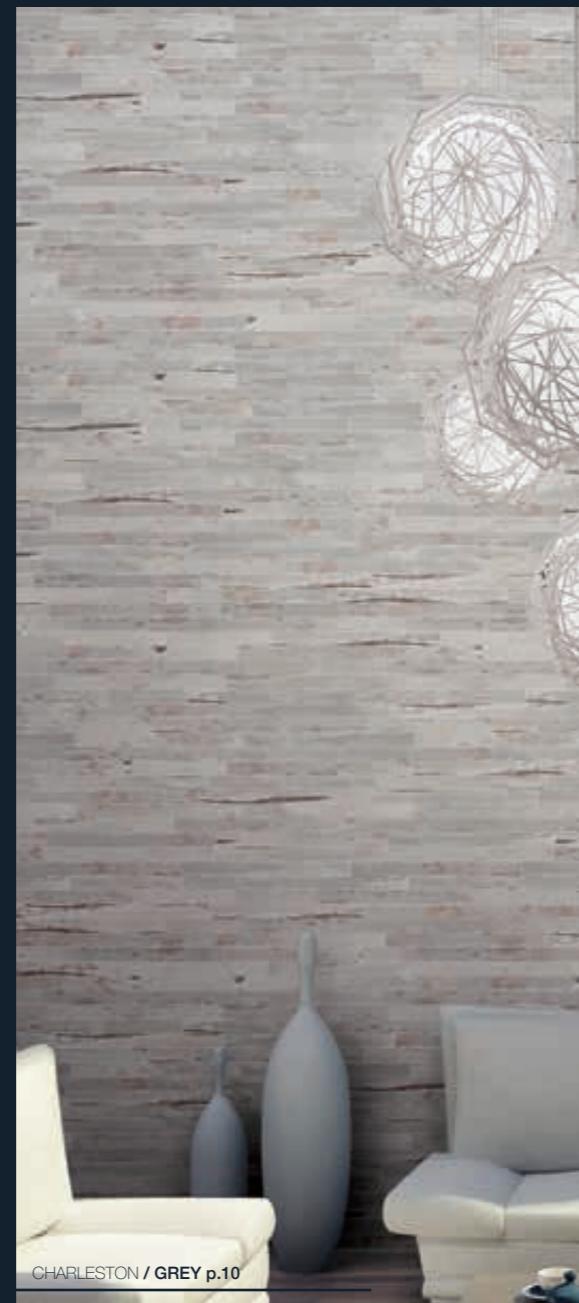
# CHARLESTON



# CHARLESTON



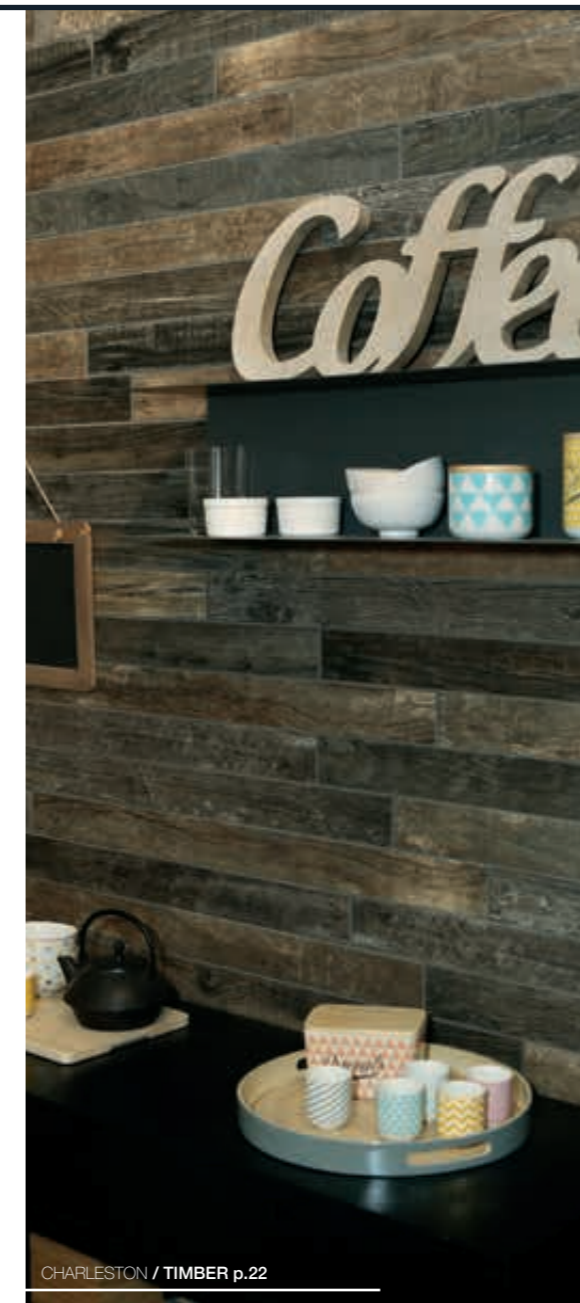
CHARLESTON / WHITE p.4



CHARLESTON / GREY p.10



CHARLESTON / MULTICOLOR p.16



CHARLESTON / TIMBER p.22

colors

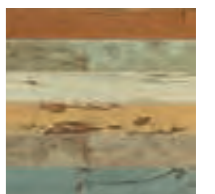
CHARLESTON / WHITE



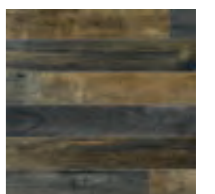
CHARLESTON / GREY



CHARLESTON / MULTICOLOR



CHARLESTON / TIMBER



Charleston is available in four colors (multicolor, grey, timber and white), all offered in a unique 3"x36" size that is suitable for every wall or floor that needs to be modernized with a shabby chic style.





CHARLESTON / WHITE

# CHARLESTON





3"x36" / WHITE



3"x36" / WHITE . 24"x48" FLAG



CHARLESTON / GREY

# CHARLESTON





# CHARLESTON



3"x36" / GREY



3"x36" / GREY



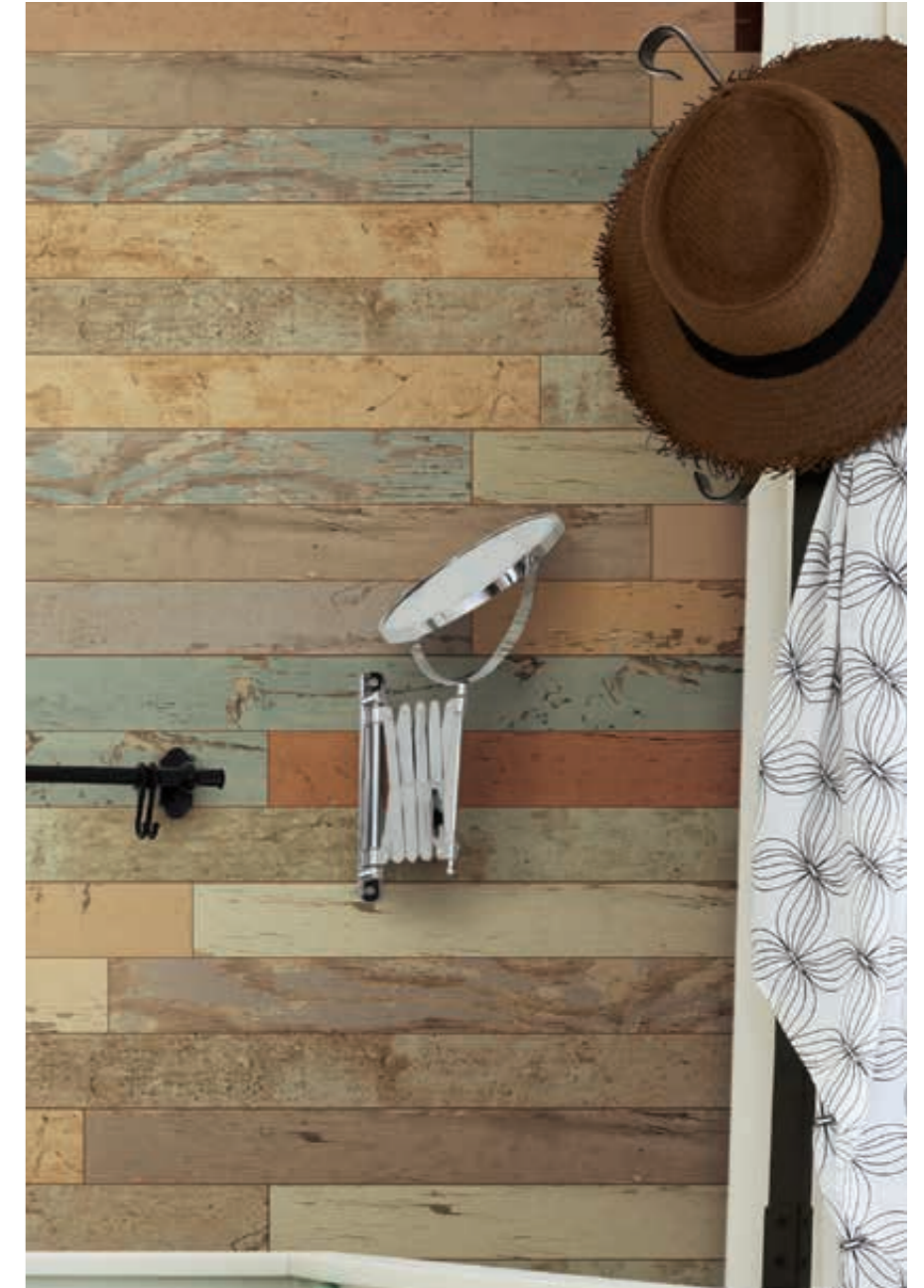
CHARLESTON / MULTICOLOR

# CHARLESTON



The multicolor wood look is stylish in any application, from restaurants to stores, from a country home to a modern abode. The charming finish adds a vintage touch that is extraordinary.

3"x36" / MULTICOLOR





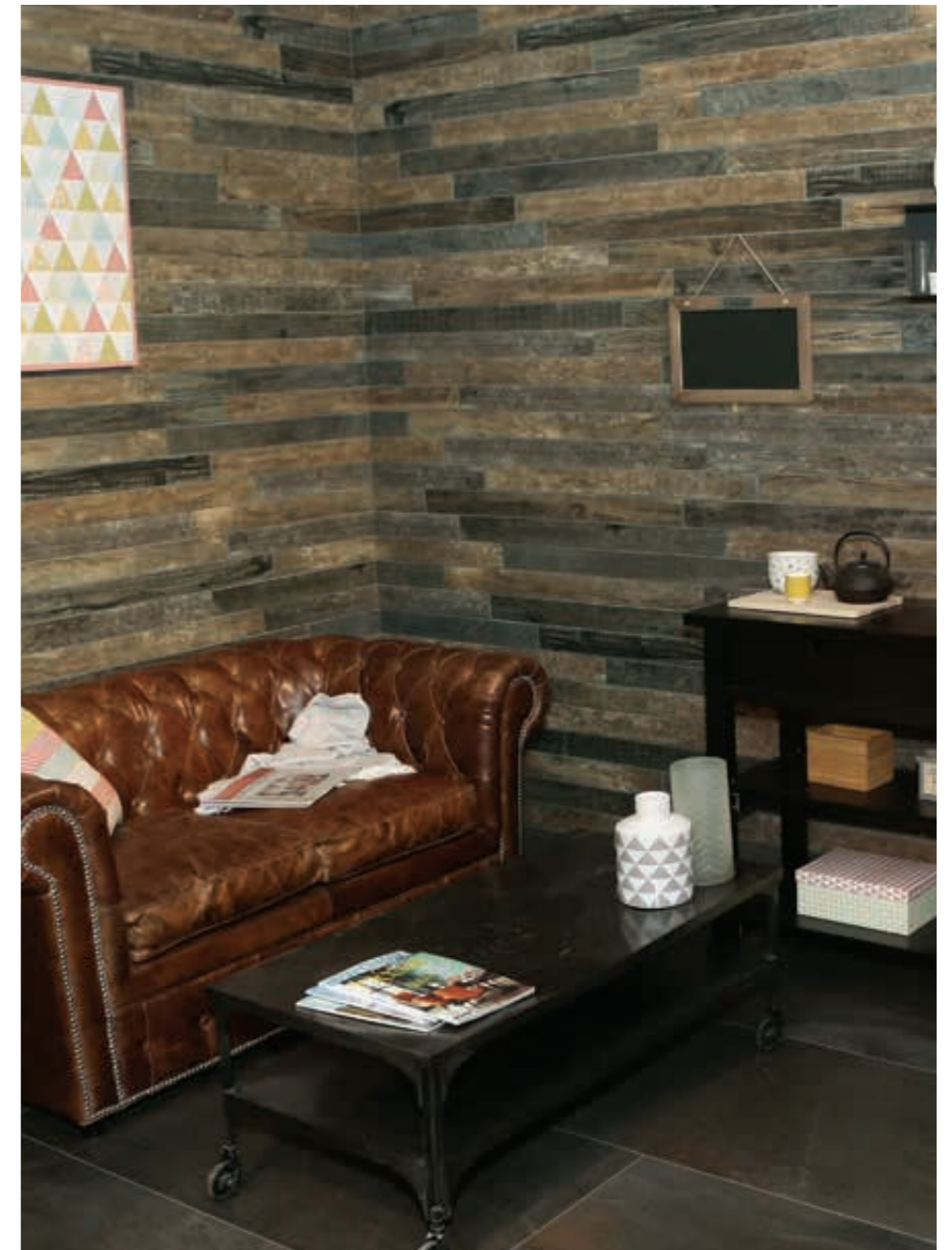
3"x36" / MULTICOLOR 24"x48" flag



CHARLESTON / **TIMBER**

# CHARLESTON





# SIZES & SHADE VARIATION

## sizes:

3"x36"



1095974 Multicolor  
1095975 White  
1095976 Grey  
1096430 Timber

24"x48"



1096115 American Flag

18"x36"



1096116 American Flag

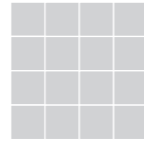
## mosaics & trim pieces:

3"x18" Bullnose



1095971 Multicolor  
1095972 White  
1095973 Grey  
1096433 Timber

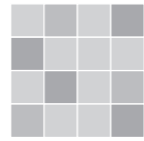
Colors shown may vary from actual product.  
Final selection should be made from actual product samples.



V1

### UNIFORM APPEARANCE

Differences among pieces from the same production run are minimal.



V2

### SLIGHT VARIATION

Clearly distinguishable differences in texture and/or pattern with similar colors.



V3

### MODERATE VARIATION

While the colors present on a single piece of tile will be indicative of the colors to be expected on the other tiles, the amount of colors on each piece will vary significantly.



V4

### SUBSTANTIAL VARIATION

Random color differences from tile to tile, so that one tile may have totally different colors from that on other tiles. Thus, the final installation will be unique.





## technical specifications

		REFERENCE VALUE	DECLARED VALUE	TEST METHOD
	SURFACE ABRASION		III-IV	ASTM C1027
	WATER ABSORPTION	≤0.5%	MEETS REQUIREMENT	ASTM C373
	CHEMICAL RESISTANCE	AS REPORTED	NOT AFFECTED	ASTM 650
	DYNAMIC COEFFICIENT OF FRICTION	≥0.42 WET	MEETS REQUIREMENT	ANSI A137.1
	STAIN RESISTANCE	AS REPORTED	NOT AFFECTED	ASTM C1378
	BREAKING STRENGTH		≥400	ASTM C648
	RESISTANCE TO FREEZE	AS REPORTED	RESISTANT	ASTM C1026



**RESISTANT FOR THE HOUSE** The product is water-resistant: it stops liquids, body oils, acidic and staining substances from penetrating the tiles. It resists scratches, scuffs and gauges better than any other floor covering. It does not absorb fumes, odors or smoke. It doesn't discolor or fade when exposed to sunlight, or other natural elements. It is completely fire proof. It resists burns and doesn't feed a fire. Its high resistance to abrasive dirt and grime makes it suitable even for heavy-traffic areas of the house such as hallways, entrances, foyers and walkways.

**FROST RESISTANT** Exceeding the ADA standard requirements, the Milestone product can also be used for outside applications. It stands up to abrupt temperature changes and freezing-thaw cycles. When properly installed according to ANSI A137.1. It's strong enough to be used in exterior applications even in frigid climates. Proper consideration must be given to the anti-slip requirements of the area to be tiled.

**ANTI-SLIP** The testing conducted on our finished product will guarantee that all of our tiles will have an anti-slip surface so they may be used with total confidence in kitchen and bath applications. The Milestone product is perfect for both home and commercial interiors, such as restaurants, offices, retail stores, etc. Its anti-slip properties provide a safe walking surface in both wet and dry conditions, according to the Americans with Disabilities Act.

**HYGIENE/SANITATION & EASY CLEANING** The Milestone product doesn't absorb odors or bacteria of any kind. It's easy to clean with a damp sponge, mop, or cloth. For a more intense cleaning, simply use a mild solution of water and a common household detergent. Regular cleaning will stop the growth of germs and bacteria in damp areas such as the bathroom.

• DUE TO THE INHERENT NATURE OF FIRED PORCELAIN TILE, IT IS IMPORTANT TO NOTE THAT THE COEFFICIENT OF FRICTION MAY VARY WITHIN AND BETWEEN PRODUCT RUNS.

## packaging

SIZES	METRIC (CM)	THICKNESS (MM)	PIECES PER BOX	SQ. FT PER BOX	WEIGHT PER BOX	BOXES PER PALLET	UOM PER PALLET	WEIGHT PER PALLET*
<b>FIELD TILES</b>								
3"x36"	7.5x90	10 mm	16	12	52.8	40	480	2,112
18"x36" AMERICAN FLAG	45x90	10 mm	1	4.5	22	N/A	N/A	N/A
24"x48" AMERICAN FLAG	60x120	10 mm	1	8	40	N/A	N/A	N/A
<b>MOSAICS AND COORDINATING TRIMS</b>								
3"x18" BULLNOSE*	7.5x45	10 mm	12	4.5	19.8	112	1,344 pcs	2,218

• TO ENSURE BASEBOARD CONSISTENCY MULTICOLOR BULLNOSE IS MADE USING AMBER COLOR ONLY

\* WEIGHT PER PALLET DOES NOT INCLUDE PALLET WEIGHT ITSELF.

ALL OTHER SIZES WILL BE PACKAGED AS ORDERED.

PLEASE CONTACT MILESTONE CUSTOMER SERVICE AT 1-877-356-7461 FOR PACKAGING INFORMATION.

MINIMUM GROUT SIZE RECOMMENDED = 5 MM (OR APPROX. 3/16") IF STAGGERED TILE PLACEMENT, WE RECOMMEND USING A 30% OFFSET. IF SPECIFIED BRICK PATTERN WITH 1/2 PATTERN MANDATORY, A BIGGER GROUT IS RECOMMENDED TO HIDE IMPERFECTIONS OF INSTALLATION (MINIMUM 1/4").

- Routine care instructions:
1. Wash with water to remove superficial dirt.
  2. Application of Fila Cleaner® Fila (commercial product) diluted to an average of 1:200 to the surface.
  3. Let the solution sit 5-7 minutes.
  4. Remove the cleaner with a vigorous mechanical cleaning action using common hand cleaning equipment, or a suitable floor-cleaning appliance.
  5. Dry the floor completely.

Note: For desired results, it is particularly important to combine the effect of the detergent with a vigorous mechanical cleaning action.

The products mentioned in these instructions do not officiate any official agreements with any floor cleaning product producers.

**CLEANING & MAINTENANCE**



**CERTIFICATIONS & ACCREDITATIONS**

**PROGRESS THAT TOUCHES AND INVESTS IN THE ENTIRE SOCIETY**

As a active member of the U.S Green Building Council, Milestone spreads awareness to the entire American communities and encourages towards the use of building solutions inspired by environmentally friendly practices. Using Milestone products for project implementation, will positively contribute in obtaining scores and points required for earning the LEED certification (Leadership in Energy and Environmental Design).

**A COMMITMENT TO THE DEVELOPMENT OF PRODUCTS FOR A CONSCIOUS BUILDING TRADE**

Milestone offers products containing recycled material. The adoption of eco-compatible production systems is merit of Italian designs produced in the U.S.

**TECHNICAL DEVELOPMENT THAT CONSIDERS THE NATURAL ENVIRONMENT**

Milestone commits to the eco-compatible project and translates the same into an avant-guard production process, minimizing the negative impact on the environment.

**WHY PORCELAIN?**

There are many reasons to choose impervious porcelain tile over other floor coverings. It offers the largest array of design options and holds its value the longest. In a comparison between the many different flooring options, porcelain tile offers one of the most durable and least expensive options over the lifespan of the building.

**Benefits of Porcelain Tile**

- Impervious to water
- Easy to maintain
- Variety of design options
- Environmentally friendly
- Resistant to germs and bacteria
- Fade resistant
- Fire resistant
- Durable - best long-term value vs. other floor coverings

**SUGGESTED INSTALLATIONS**

**PEI Class III**  
**Light to moderate foot traffic**  
 Recommended for countertops, walls, and floors where normal foot traffic is expected.

**PEI Class IV**  
**Moderate to heavy foot traffic**  
 Recommended for all residential applications as well as medium commercial and light institutional applications.



300 International Blvd. Clarksville, TN 37040 | [www.milestonetiles.com](http://www.milestonetiles.com) | 1-877-356-7461

